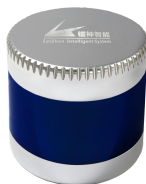


CX Series 32 / 20-Channel LiDAR



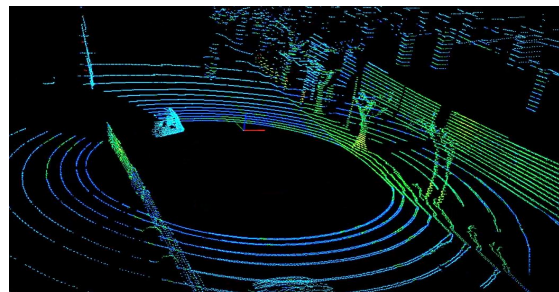
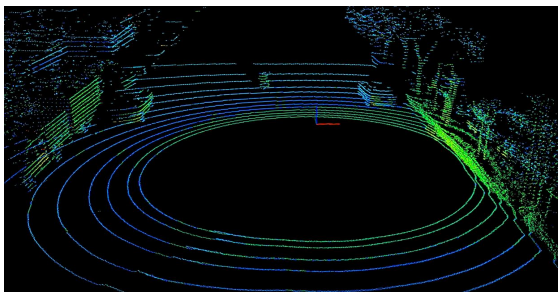
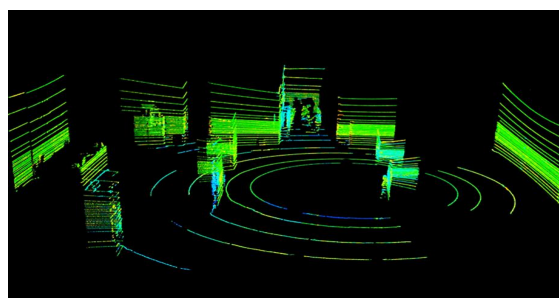
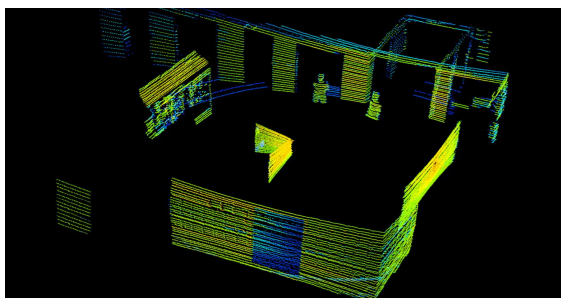
Abstract

CX Series 32 / 20 channel LiDAR achieves 360° 3D high-speed scanning with 3 20-beam laser, measurement range up to 200 m, $\pm 3\text{cm}$ accuracy, minimum vertical angle resolution up to 0.33° (C32) / 1° (C20), C32 widely used in autonomous vehicle, ADAS, smart transportation, service robots, logistics, surveying and mapping, security and so on. The C20 channel LIDAR can detect moving targets on large-area scenes with 16-beam laser scanning down, which widely used in V2X, smart transportation

Features

- High point density, capability of generating approximately 640,000 point per second (C32) / 400,000 point per second (C20) .
- Wide field of view, with 360° horizontal FOV and 32° vertical FOV.
- The C32 Vertical angular resolution up to 0.33° , focused on front area data acquisition.

Demo



Specifications

Model		C32		C20	
Channel		32		20	
Measurement Technique		Time of Flight(TOF)			
Wavelength		905nm			
Laser Product Classification		Class 1 Eye-safe/ IEC 60825-1:2007 & 2014			
Measurement Range		70m / 120m /150m			
Ranging Accuracy		±3cm			
Data Points Generated		640,000points per second		400,000points per second	
Rotation Rate		5Hz , 10Hz , 20Hz			
Field of View (FOV)	Horizontal	360°			
	Vertical	-16°~ 15°	-18°~ 14°	-16°~ 3°	
Angular Resolution	Horizontal	5Hz: 0.09° / 10Hz: 0.18° / 20Hz: 0.36°			
	Vertical	0.33° / 1°			
Operating Voltage		9V~ 36VDC			
Operating Temperature		-20℃ ~ 60℃ (Customized up to -40℃)			
Communication Interface		Ethernet , PPS			
Shock Test		500m/sec ² , last11ms			
Vibration		5Hz-2000Hz , 3G rms			
IP		IP 67			
Dimension (D·H)		Φ120*110mm			
Weight		1600g			



**Dealer of Leishen LIDAR products and technical solutions
in Australia and New Zealand Region**

Contact: +61 412 75 2033

Email: info@mgwtradenservice.com.au

Website: <https://mgwtradenservice.com.au/leishen-lidar/>

Location: Melbourne, Australia