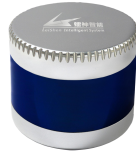


CX Series 16-Channel LiDAR



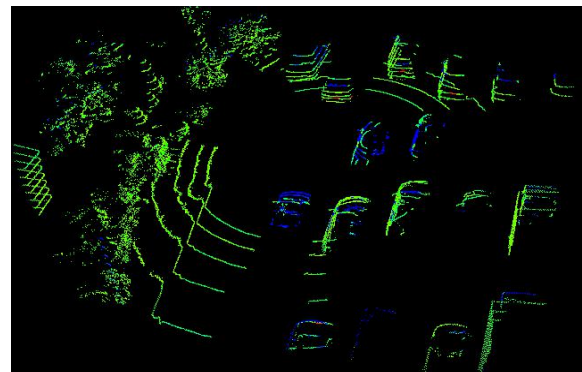
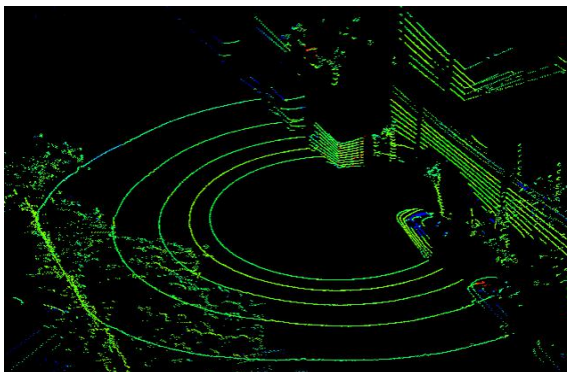
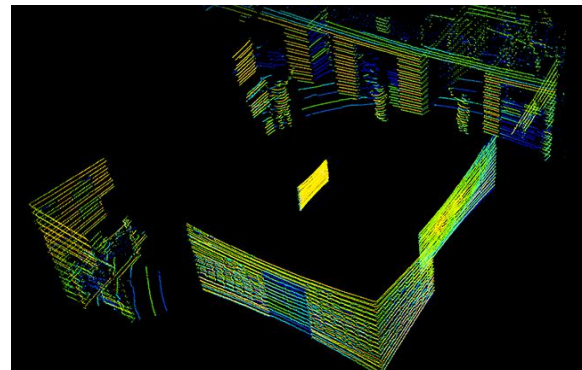
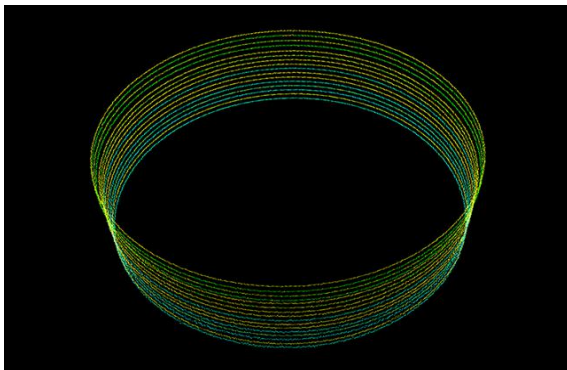
Abstract

CX Series 16 channel LIDAR achieves 360 ° 3D high-speed scanning with 16-beam laser, measurement range up to 200 m, $\pm 3\text{cm}$ accuracy, up to 1.33° vertical angle resolution, widely used in autonomous vehicle, ADAS, smart transportation, service robots, logistics, surveying and mapping, security and so on.

Features

- High point density, capable of generating approximately 320,000 3D point cloud coordinates per second
- Wide field of view, with 360° horizontal FOV and 32° vertical FOV.
- Compact size and light weight

Demo



Specifications

Model		C16			
Channel		16			
Measurement Technique		Time of Flight (TOF)			
Wavelength		905nm			
Laser Product Classification		Class 1 Eye-safe/ IEC 60825-1:2007 & 2014			
Measurement Range		70m / 120m / 150m			
Ranging Accuracy		±3cm			
Data Points Generated		320,000 points per second			
Rotation Rate		5Hz , 10Hz , 20Hz			
Field of View (FOV)	Horizontal	360°			
	Vertical	-15°~ 15°	-14°~ 16°	-15°~ 15°	-10°~ 10°
Angular Resolution	Horizontal	5Hz: 0.09° / 10Hz: 0.18° / 20Hz: 0.36°			
	Vertical	2°		2°	1.33°
Operating Voltage		9V~ 36VDC			
Communication Interface		Ethernet , PPS			
Operating Temperature		-20°C ~ 60°C (Customized up to -40°C)			
Shock Test		500m/sec ² , last11ms			
Vibration		5Hz-2000Hz , 3G rms			
IP		IP 67			
Dimension (D·H)		120*110mm	102*78mm		
Weight		1600g	1000g		



**Dealer of Leishen LIDAR products and technical solutions
in Australia and New Zealand Region**

Contact: +61 412 75 2033

Email: info@mgwtradeservice.com.au

Website: <https://mgwtradeservice.com.au/leishen-lidar/>

Location: Melbourne, Australia