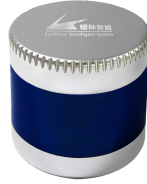


## CX Series 32 / 20-Channel LiDAR



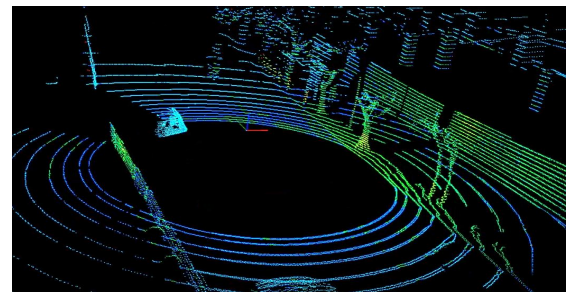
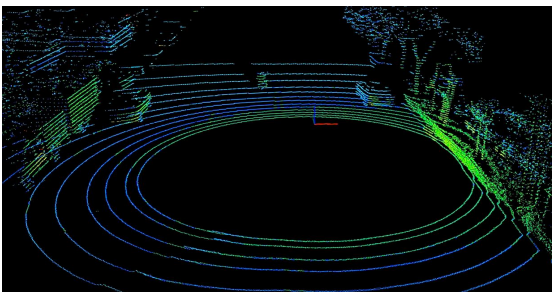
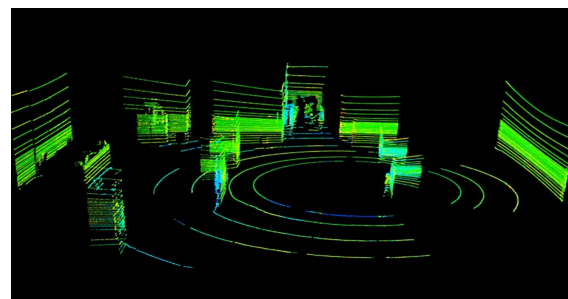
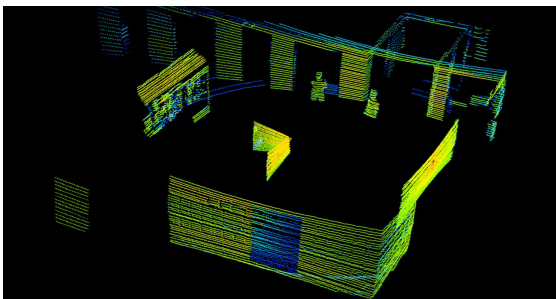
### Abstract

CX Series 32 / 20 channel LiDAR achieves 360° 3D high-speed scanning with 3 20-beam laser, measurement range up to 200 m,  $\pm 3\text{cm}$  accuracy, minimum vertical angle resolution up to  $0.33^\circ$ (C32) /  $1^\circ$ (C20), C32 widely used in autonomous vehicle, ADAS, smart transportation, service robots, logistics, surveying and mapping, security and so on. The C20 channel LIDAR can detect moving targets on large-area scenes with 16-beam laser scanning down, which widely used in V2X , smart transportation

### Features

- High point density, capability of generating approximately 640,000 point per second ( C32 ) / 400,000 point per second ( C20 ) .
- Wide field of view, with 360° horizontal FOV and 32° vertical FOV.
- The C32 Vertical angular resolution up to  $0.33^\circ$ , focused on front area data acquisition.

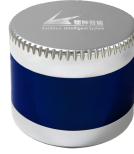
### Demo



## Specifications

Model		C32		C20	
Channel		32		20	
Measurement Technique		Time of Flight(TOF)			
Wavelength		905nm			
Laser Product Classification		Class 1 Eye-safe/ IEC 60825-1:2007 & 2014			
Measurement Range		70m / 120m /150m			
Ranging Accuracy		±3cm			
Data Points Generated		640,000points per second		400,000points per second	
Rotation Rate		5Hz , 10Hz , 20Hz			
Field of View (FOV)	Horizontal	360°			
	Vertical	-16°~ 15°	-18°~ 14°	-16°~ 3°	
Angular Resolution	Horizontal	5Hz: 0.09° / 10Hz: 0.18° / 20Hz: 0.36°			
	Vertical	0.33° / 1°			
Operating Voltage		9V~ 36VDC			
Operating Temperature		-20°C ~ 60°C ( Customized up to -40°C )			
Communication Interface		Ethernet , PPS			
Shock Test		500m/sec <sup>2</sup> , last11ms			
Vibration		5Hz-2000Hz , 3G rms			
IP		IP 67			
Dimension ( D·H )		Φ120*110mm			
Weight		1600g			

## CX Series 16-Channel LiDAR



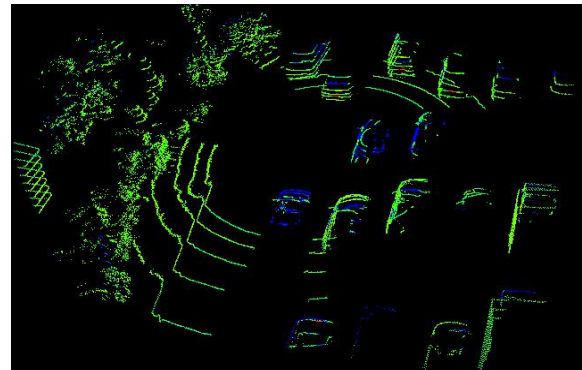
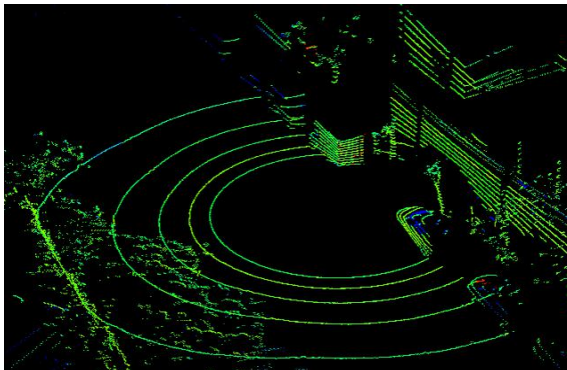
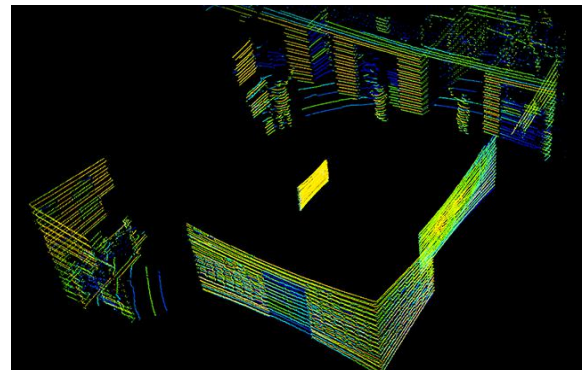
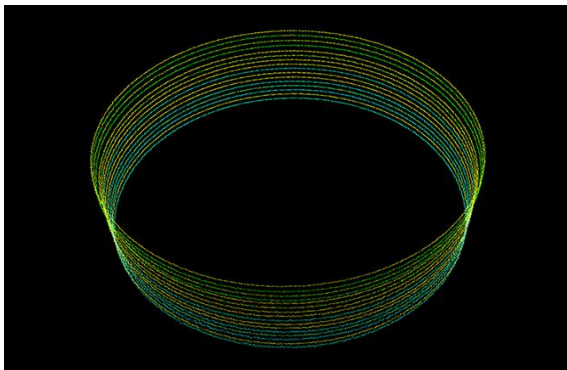
### Abstract

CX Series 16 channel LIDAR achieves 360 ° 3D high-speed scanning with 16-beam laser, measurement range up to 200 m,  $\pm 3\text{cm}$  accuracy, up to  $1.33^\circ$  vertical angle resolution, widely used in autonomous vehicle, ADAS, smart transportation, service robots, logistics, surveying and mapping, security and so on.

### Features

- High point density, capable of generating approximately 320,000 3D point cloud coordinates per second
- Wide field of view, with  $360^\circ$  horizontal FOV and  $32^\circ$  vertical FOV.
- Compact size and light weight

### Demo



## Specifications

Model		C16			
Channel		16			
Measurement Technique		Time of Flight (TOF)			
Wavelength		905nm			
Laser Product Classification		Class 1 Eye-safe/ IEC 60825-1:2007 & 2014			
Measurement Range		70m / 120m / 150m			
Ranging Accuracy		±3cm			
Data Points Generated		320,000 points per second			
Rotation Rate		5Hz , 10Hz , 20Hz			
Field of View (FOV)	Horizontal	360°			
	Vertical	-15°~ 15°	-14°~ 16°	-15°~ 15°	-10°~ 10°
Angular Resolution	Horizontal	5Hz: 0.09° / 10Hz: 0.18° / 20Hz: 0.36°			
	Vertical	2°		2°	1.33°
Operating Voltage		9V~ 36VDC			
Communication Interface		Ethernet , PPS			
Operating Temperature		-20°C ~ 60°C ( Customized up to -40°C )			
Shock Test		500m/sec <sup>2</sup> , last11ms			
Vibration		5Hz-2000Hz , 3G rms			
IP		IP 67			
Dimension ( D·H )		120*110mm		102*78mm	
Weight		1600g		1000g	



**Dealer of Leishen LIDAR products and technical solutions  
in Australia and New Zealand Region**

**Contact:** +61 412 75 2033

**Email:** [info@mgwtradeservice.com.au](mailto:info@mgwtradeservice.com.au)

**Website:** <https://mgwtradeservice.com.au/leishen-lidar/>

**Location:** Melbourne, Australia